



CERTIFICATE OF ANALYSIS

20 Martin Ross Avenue, North York, ON, M3J 2K8, CANADA
Tel: (416) 665-9696, Fax: (416) 665-4439
Email: orders.trc@lgcgroup.com Website: www.trc-canada.com

1. Identification

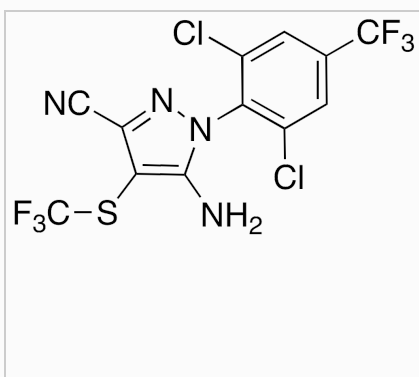
Catalogue Number: F342210

CAS Number: 120067-83-6

Product: Fipronil Sulfide

Synonym: 1-(2,6-Dichloro-4-trifluoromethylphenyl)-3-cyano-5-amino-4-(trifluoromethylthio)pyrazole; 5-Amino-1-(2,6-dichloro-4-trifluoromethylphenyl)-4-trifluoromethylthio-1H-pyrazole-3-carbonitrile; MB 45950; 5-Amino-3-cyano-1-(2,6-dichloro-4-trifluoromethylphenyl)-4-(trifluoromethylthio)pyrazole;

Structure:



Molecular Formula:

C₁₂H₄Cl₂F₆N₄S

Molecular weight:

421.15

Source of Product:

Synthetic

Solubility:

DMSO (Slightly), Methanol (Slightly)

Lot Number: 1-CHH-78-1

Purity: 97%

Shipping Condition: This Product Is Stable To Be Shipped At Room Temperature

Storage Condition: 4°C

2. Warning

Warning 1:

Warning 2:

Warning 3:

3. Analytical Information

| Tests: | Specifications: | Results: |
|--------------------|----------------------------|--------------------------------|
| Appearance | White to Pale Yellow Solid | White Solid |
| Elemental Analysis | Conforms | %C: 33.82, %H: 0.69, %N: 12.97 |
| HPLC Purity | Report Result | 99.78% (220 nm) |
| MS | Conforms to Structure | Conforms |
| NMR | Conforms to Structure | Conforms |
| F NMR | Conforms to Structure | Conforms |
| FT-IR | Conforms to Structure | Conforms |

Additional Information: N/A

Purity is based on the analytical results of the tests performed. NMR and Elemental Analysis (if available) may have an accuracy of ± 2%. Isotopic purity is based on mass distribution observed. The contents of the specifications are subject to change without advance notice, and the specification values displayed here are the most up to date values.

4. Signatures

| Reviewed By | Reviewed By | C of A Approved By | Test Date | Retest Date |
|---|---|---|-----------|-------------|
| Neha Khanna | Toni Rantanen | Chanell Chu | 7/27/2021 | 7/25/2025 |
|  |  |  | | |